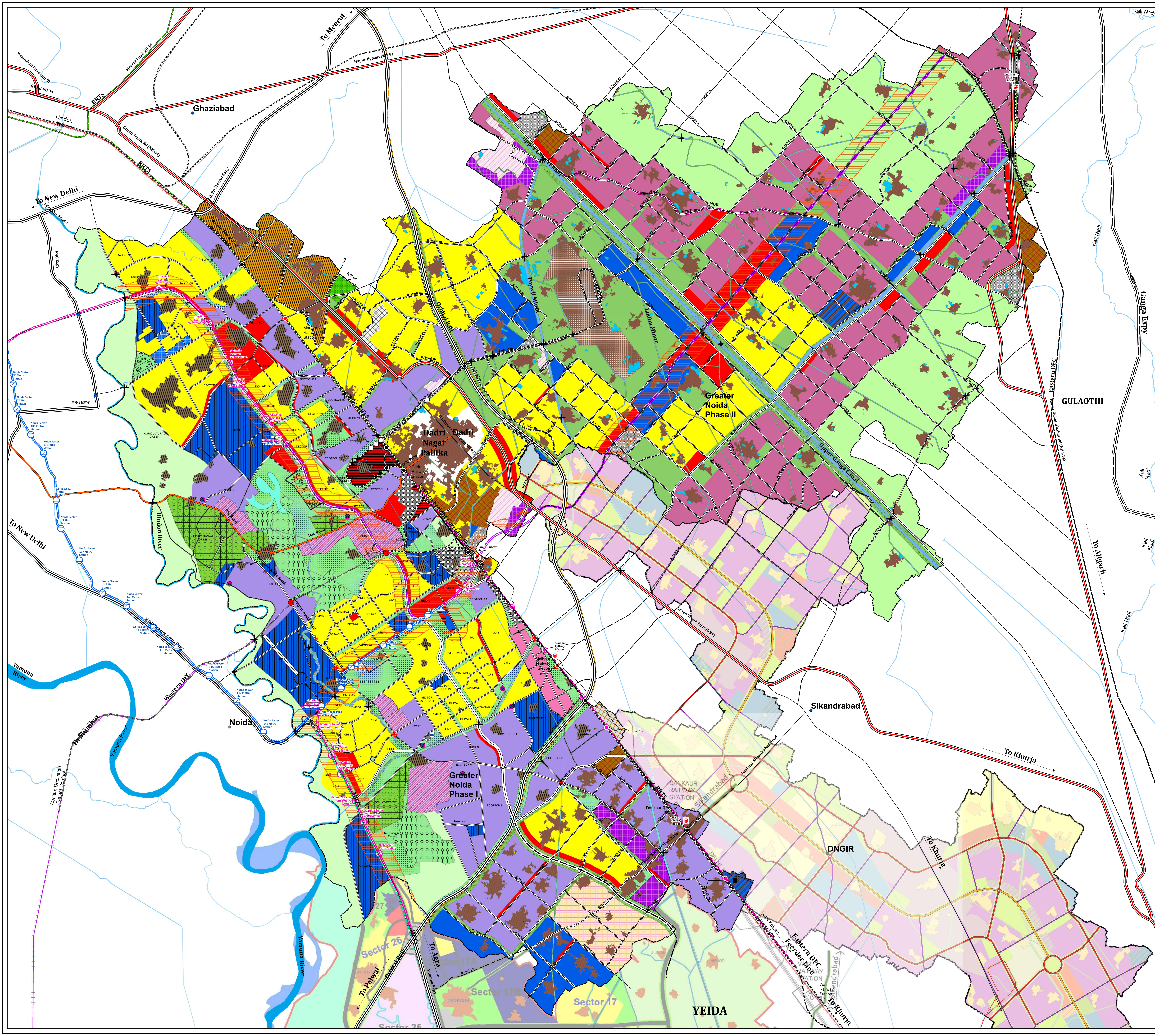
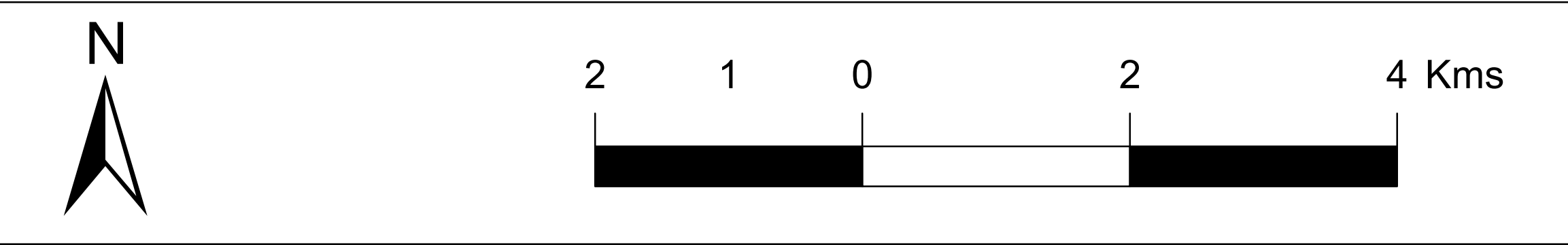


GREATER NOIDA DRAFT MASTER PLAN - 2041 PROPOSED LANDUSE MAP



LEGEND	
MASTER PLAN 2021	
Residential	
	Residential
	Village Abadi
Commercial	
	Commercial
	Wholesale Mandi
Industrial	
	Industrial, Manufacturing
	Intigrated Township
Public & Semi-Public & Utilities	
	Utility
	Institutional
Traffic & Transportation	
	Transport Centre
	MMTH
	Railway Land
	Road
Recreational	
	Recreational Green
	Institutional Green
	Forest
	Sport City
Waterbody	
	Canal
	Pond/Lake
Others	
	SCZ
	Government Land
	UPSICD
	Agriculture Land
PROPOSED LANDUSE 2041	
RESIDENTIAL	
	Residential
	Village Abadi
	Re-development
COMMERCIAL	
	Commercial
INDUSTRIAL	
	Heavy Industry (Non Polluted)
	Mixed Landuse-Industry
	Small Industry (Non Polluted)
PUBLIC & SEMI-PUBLIC & UTILITIES	
	Institutional/Public-Semi Public
	Utility
	Mixed Landuse-Hospitality
TRAFFIC & TRANSPORTATION	
	Road
	MLLH / Logistic Hub
	MMTH / Transport Nagar, TN
	Railway Property
GREENS & RECREATIONAL	
	Institutional Green
	Green Areas
	Green Belt
WATERBODY	
	Ponds/Lake
	Canal
	River
OTHERS	
	Government Land (Use Undetermined)
	UPSICD
	NTPC
	Agriculture
	TOD ZONE
	IITGNL
ROAD NETWORK	
	Expressway
	National Highway
	State Highway
PROPOSED ROAD NETWORK	
	PROPOSED EXPRESSWAY
RAILWAY NETWORK	
	RAILWAY LINE
	EASTERN DFC
	WESTERN DFC
	METRO LINE
	APPROVED METRO LINE
	PROPOSED METRO LINE
PUBLIC UTILITIES	
	STP
	Solid Waste Disposable
TRANSPORTATION NODES	
	Bus Stand, <Null>
	PROPOSED FOOT OVER BRIDGE
	OVER HEAD BRIDGE
	Proposed Flyover
	Existing Flyover
	OTHER BRIDGES/CULVERTS
	Existing ROB
	Approved ROB
	Proposed ROB
	Proposed Under Bridge
	EXISTING METRO STATION
	PROPOSED METRO STATION
	RAILWAY STATION

Client:
Greater Noida Industrial Development Authority,
Gautam Budh Nagar, Uttar Pradesh



Consultant:
Ruderabishek Enterprises Limited,
A-6, Sector 58, Noida

